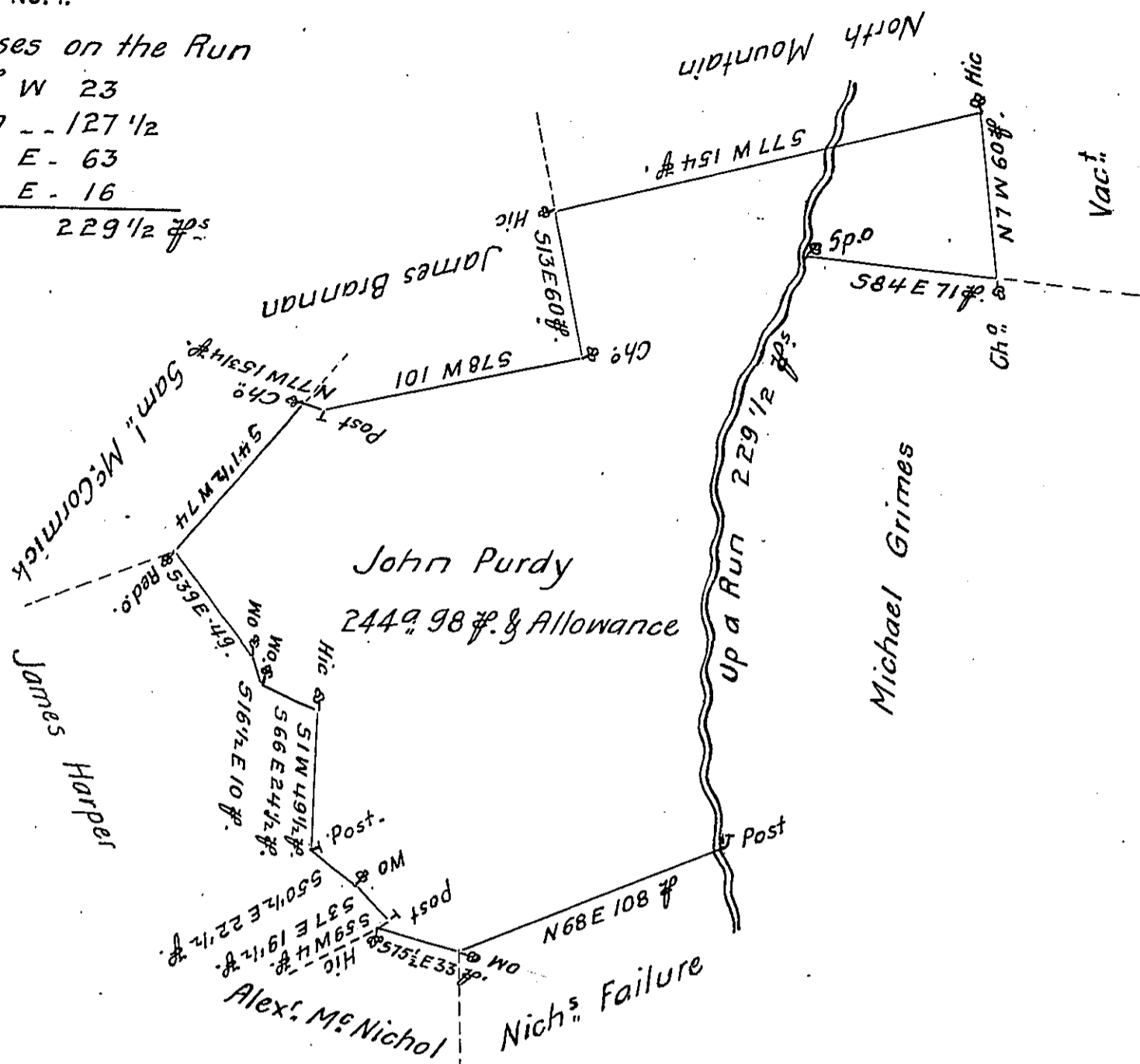


Courses on the Run

N 21° W 23
 North -- 127 1/2
 N 27 E - 63
 N 12 E - 16

 229 1/2 p.s.



A Draft of a Tract of Land Situate in Newton Township in the County of Cumberland Containing two hundred and forty four Acres and 98 Perches and the Allowance of Six p.s. Cent. for Roads &c. Survey'd August 7th 1786 in pursuance of a Warrant granted to John Purdy bearing Date the first Day of May 1786.

Matt^w. Henderson D.S.

To Daniel Brodhead Esq^r.
 Surveyor General. ~

IN TESTIMONY that the above is a copy of the original remaining on file in the Department of Internal Affairs of Pennsylvania, made conformably to an Act of Assembly approved the 16th day of February, 1833, I have hereunto set my Hand and caused the Seal of said Department to be affixed at Harrisburg, this eighth day of May 1906

Laack Perry
 Secretary of Internal Affairs.